



1

HOTEL
mayfair

GATHER AT 1
MEETING & EVENTS

2024



1 Hotel Mayfair is the first of its kind in London, a natural oasis in the heart of Mayfair that celebrates the powerful exchange that happens when people gather together. Our nature-infused, flexible spaces are ideal for a range of events including intimate private dinners, full-day business meetings, product launches and special celebrations.

The 1 team can bring your event to life with a variety of seasonal menus and event planning services for an event as productive as it is memorable.



SOCIALISE AT 1

CORPORATE EVENTS AND MEETINGS

Ensure your meeting is both productive and memorable with our planning services. We can accommodate high-level board meetings, multi-day conferences, networking events and more.

CELEBRATIONS

Celebrate life's milestone events including birthdays, engagements, anniversaries, showers, rehearsal dinners, private dinner parties and more. We'll find a reason to celebrate with something special for everyone.

WEDDINGS

Host a beautiful ceremony and dinner to celebrate your perfect union in an unforgettable atmosphere.

SOCIAL EVENTS

Your one-of-a-kind event fits perfectly in our unique spaces, from product launches to runway shows, fundraising events, panel discussions, film shoots and more.

PRIVATE DINING

Our catering team at 1 Hotel Mayfair will bring your private dining experience to the next level with custom planning services and delicious food.

SHOWROOMS

Transform our first floor event spaces into product showrooms or plan a memorable brand launch in one of our signature suites. Our flexible spaces will provide a nature-inspired canvas to create an unforgettable experience for your guests.



CAPACITY CHART

Event room	Size	Dimensions	Boardroom or Dinner (with Screen)	Boardroom or Dinner (without Screen)	Cabaret (7 per table)	Classroom	Banquet Rounds (10 per table)	Banquet two long tables side by side	U-shape	Hollow Square	Theatre	Reception
FOXTAIL	32 SQM	5.99 X 5.21 M	10	10	7	10	10	-	12	15	20	25
SWEET REED	40 SQM	5.82 X 7.40 M	11	12	14	15	20	28	18	24	30	30
FIELD WOOD	43 SQM	7.25 X 6.12 M	11	12	14	15	20	28	18	24	26	30
CLOVER	42 SQM	6.26 X 7.25 M	11	12	14	15	30	28	18	24	26	30
WILD OAT	26 SQM	4.30 X 6.04 M	10	10	-	-	-	-	-	-	-	-
FOXTAIL SWEET REED	65 SQM	5.21 X 12.51 M	24	26	28	25	40	-	27	24	80	60
FIELD WOOD CLOVER	87 SQM	7.25 X 12.00 M	-	-	-	-	50	-	-	-	50	80
MEADOW	158 SQM	16.75 X 12.51 M	28	30	56 (8 X 7)	30	80	72	35	40	60	150
DOVETALE RESTAURANT	332.1 SQM		-	-	-	-	-	-	-	-	-	275
DOVETALE TERRACE	95.7 SQM		-	-	-	-	-	-	-	-	-	70
DOVER YARD BAR	164.7 SQM		-	-	-	-	-	-	-	-	-	150
NEIGHBOURS CAFE	63.2 SQM		-	-	-	-	-	-	-	-	-	30
NIGHTINGALE	46 SQM		22	22	-	-	-	-	-	-	-	60
PICADILLY GREENHOUSE SUITE (826)	82 SQM		-	-	-	-	-	-	-	-	-	30
DOVER TERRACE SUITE (726)	142 SQM		-	-	-	-	-	-	-	-	-	30
GARDEN TERRACE SUITE (710)	174 SQM		-	-	-	-	-	-	-	-	-	15
GREEN PARK PENTHOUSE (717)	274 SQM		-	-	-	-	-	-	-	-	-	60

Events booked in Signature suites will require overnight hold prior and post (subject to event timings) with check-in at 3.00pm and check-out at 12.00 Noon



EVENT SPACES

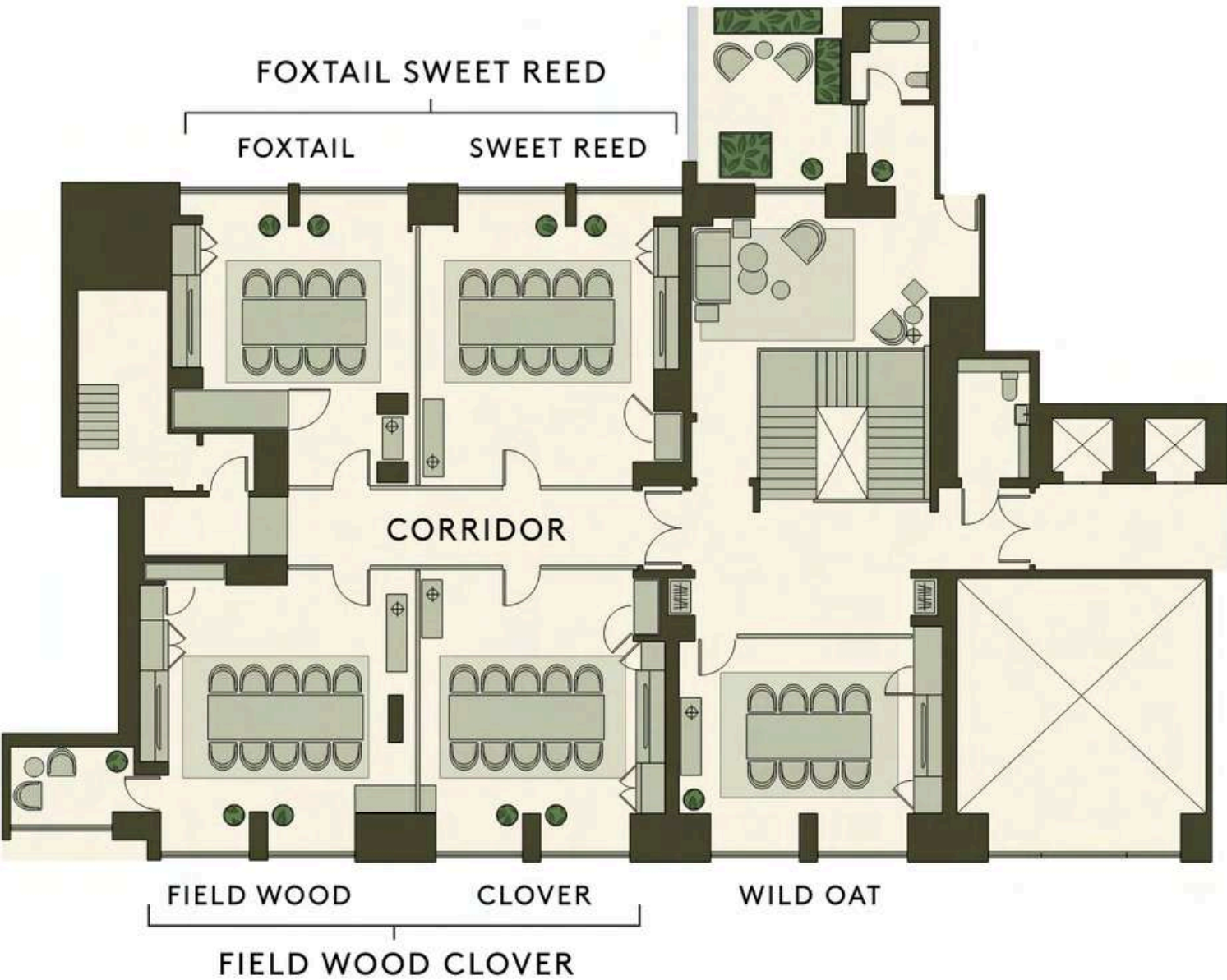
Our property features private spaces on the first floor that are integrated with a social area to gather during breaks, as well as before and after events. Inspired by nature, with thoughtful details of natural materials. Powered by technology, with sound systems and HD screens. From intimate gatherings for 8 up to 80 guests, discover your perfect space at 1 Hotel Mayfair.

MEADOW | FOXTAIL | SWEET REED | FIELD WOOD | CLOVER | WILD OAT

Meeting spaces are equipped with:

- Mounted Touch-Panel Control
- Audio Inputs (HDMI, 3.5 MM, RCA, USB)
- Multiple Power Outlets
- Surround sound
- 75" Samsung Screen with wireless clickshare connectivity

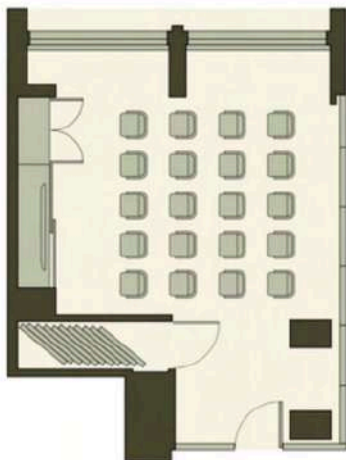
FLOORPLAN



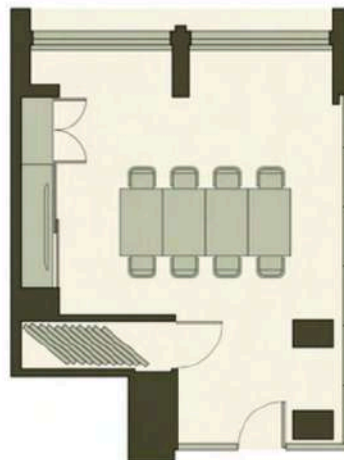
FOXTAIL



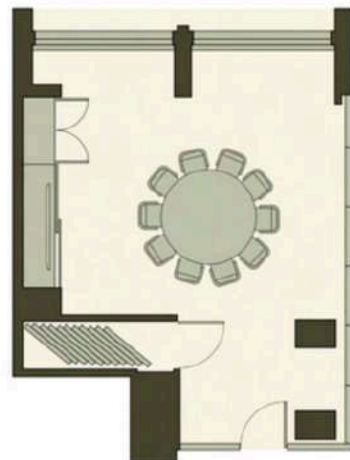
FOXTAIL THEATRE
20 GUESTS



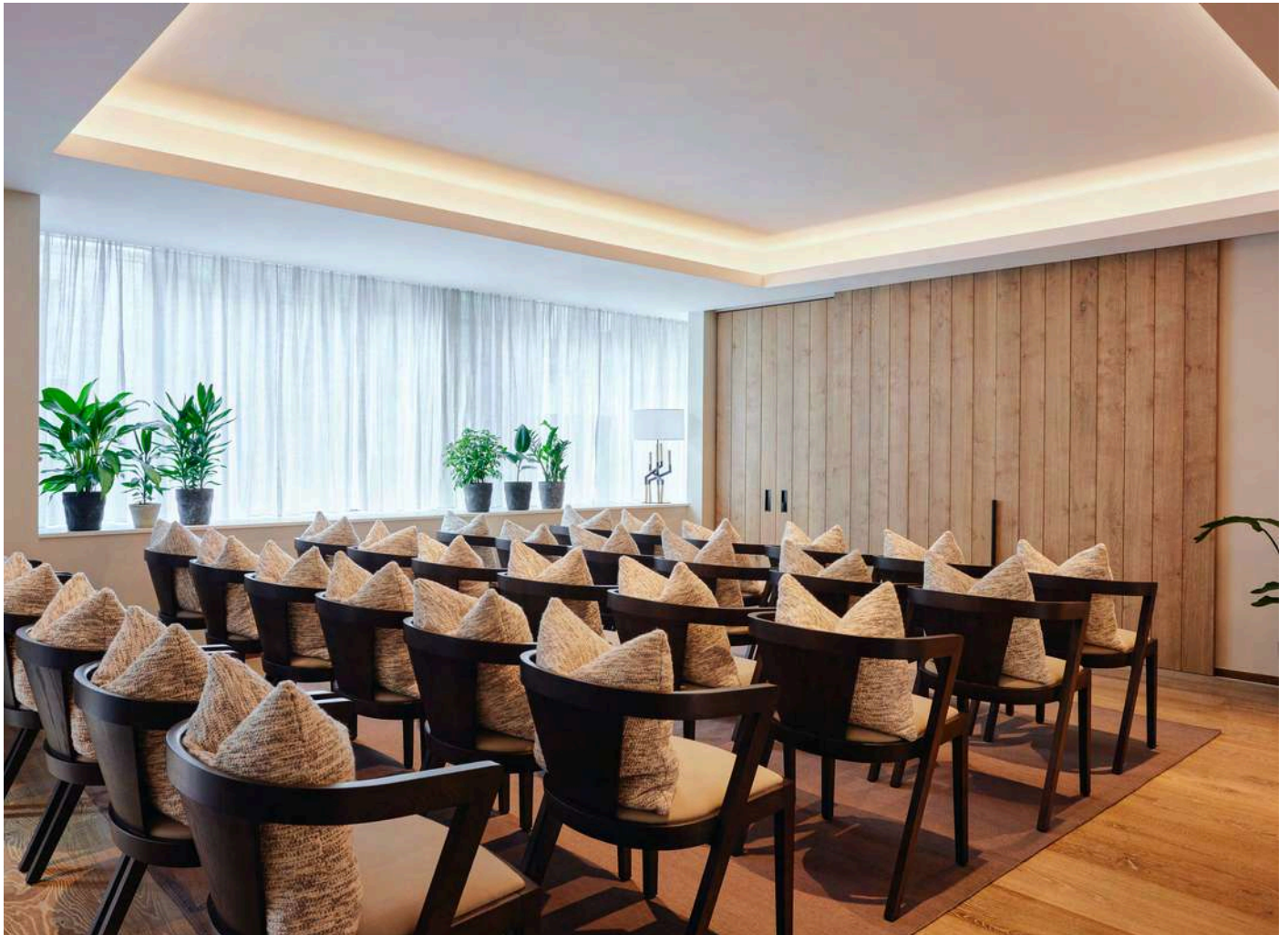
FOXTAIL BOARDROOM
8 GUESTS



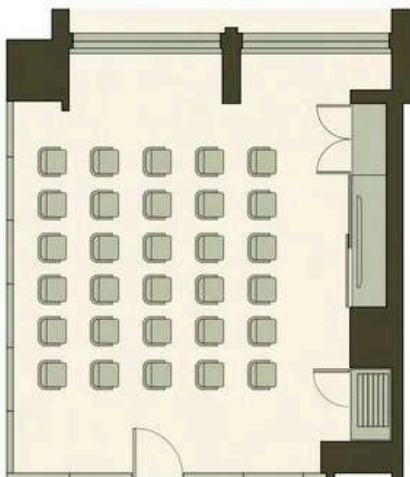
FOXTAIL BANQUET
10 GUESTS



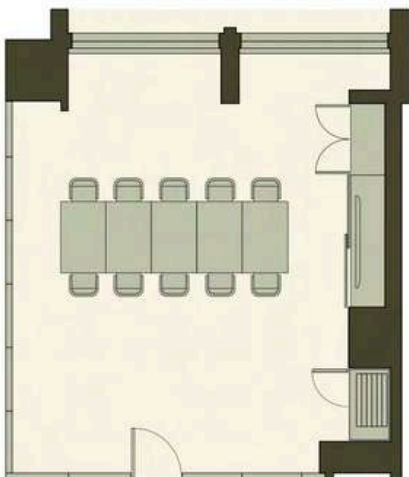
SWEET REED



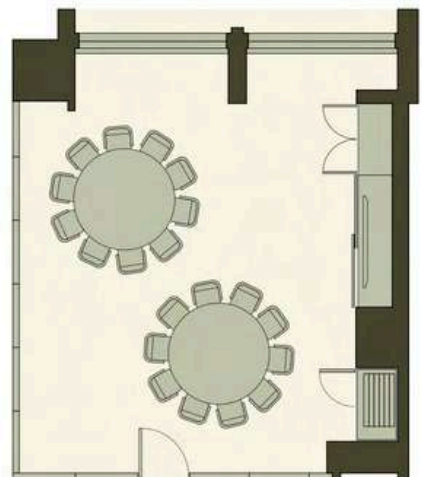
SWEET REED THEATRE
30 GUESTS



SWEET REED BOARDROOM
10 GUESTS



SWEET REED BANQUET
20 GUESTS

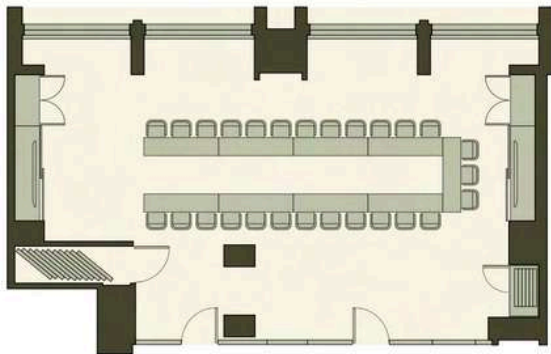


FOXTAIL SWEET REED



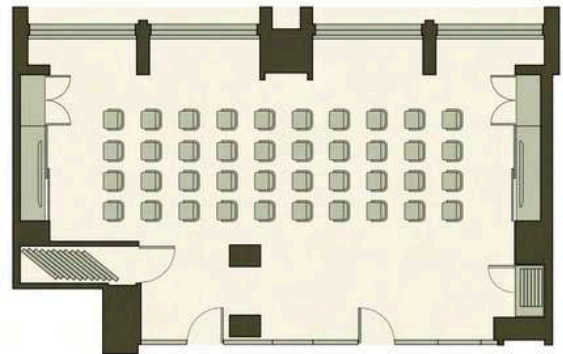
FOXTAIL SWEET REED U-SHAPE

18 WITH 2 PER TABLE, 27 WITH 3 PER TABLE
HOLLOW SQUARE SIMILAR, WITH 2 OR 3 MORE GUESTS ON THE LEFT



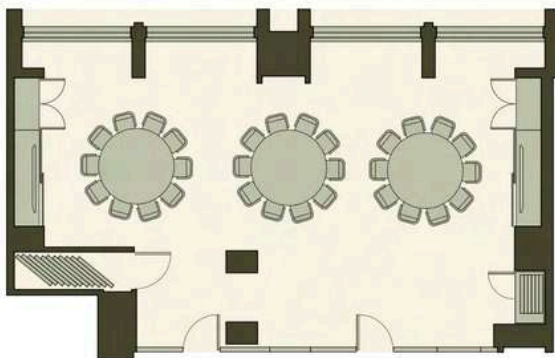
FOXTAIL SWEET REED THEATRE

40 GUESTS, 10 ROWS OF 4



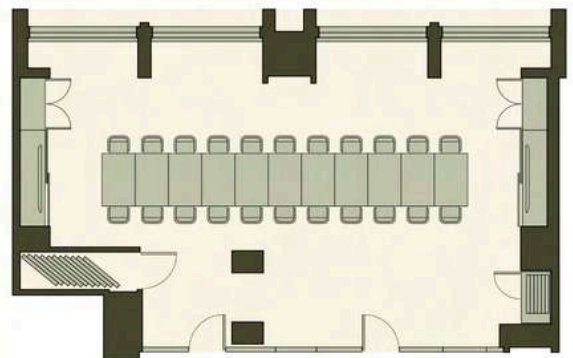
FOXTAIL SWEET REED BANQUET

3 TABLES OF 10 GUESTS EACH



FOXTAIL SWEET REED BOARDROOM

22 GUESTS



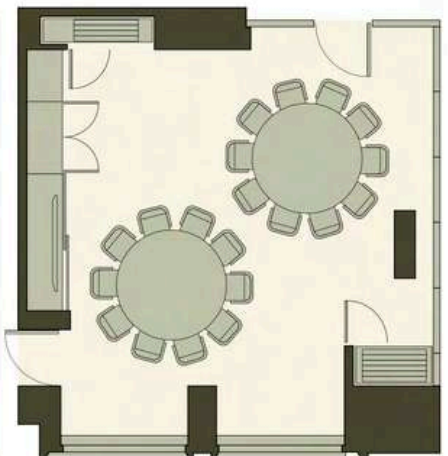
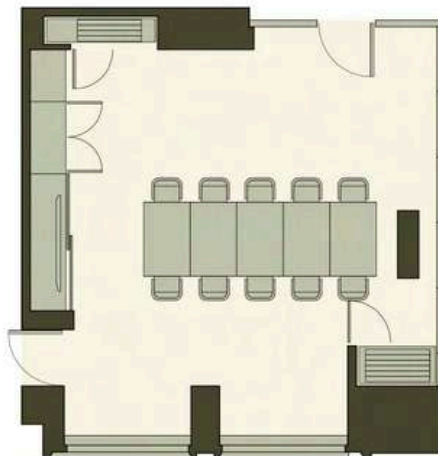
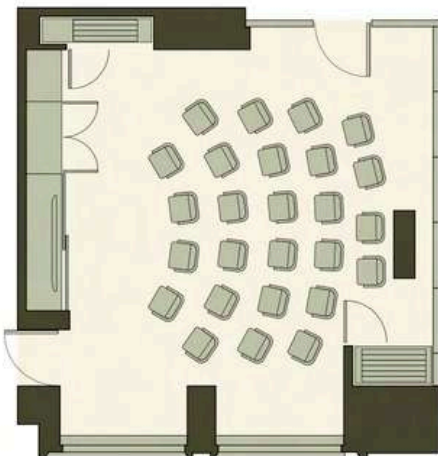
FIELD WOOD



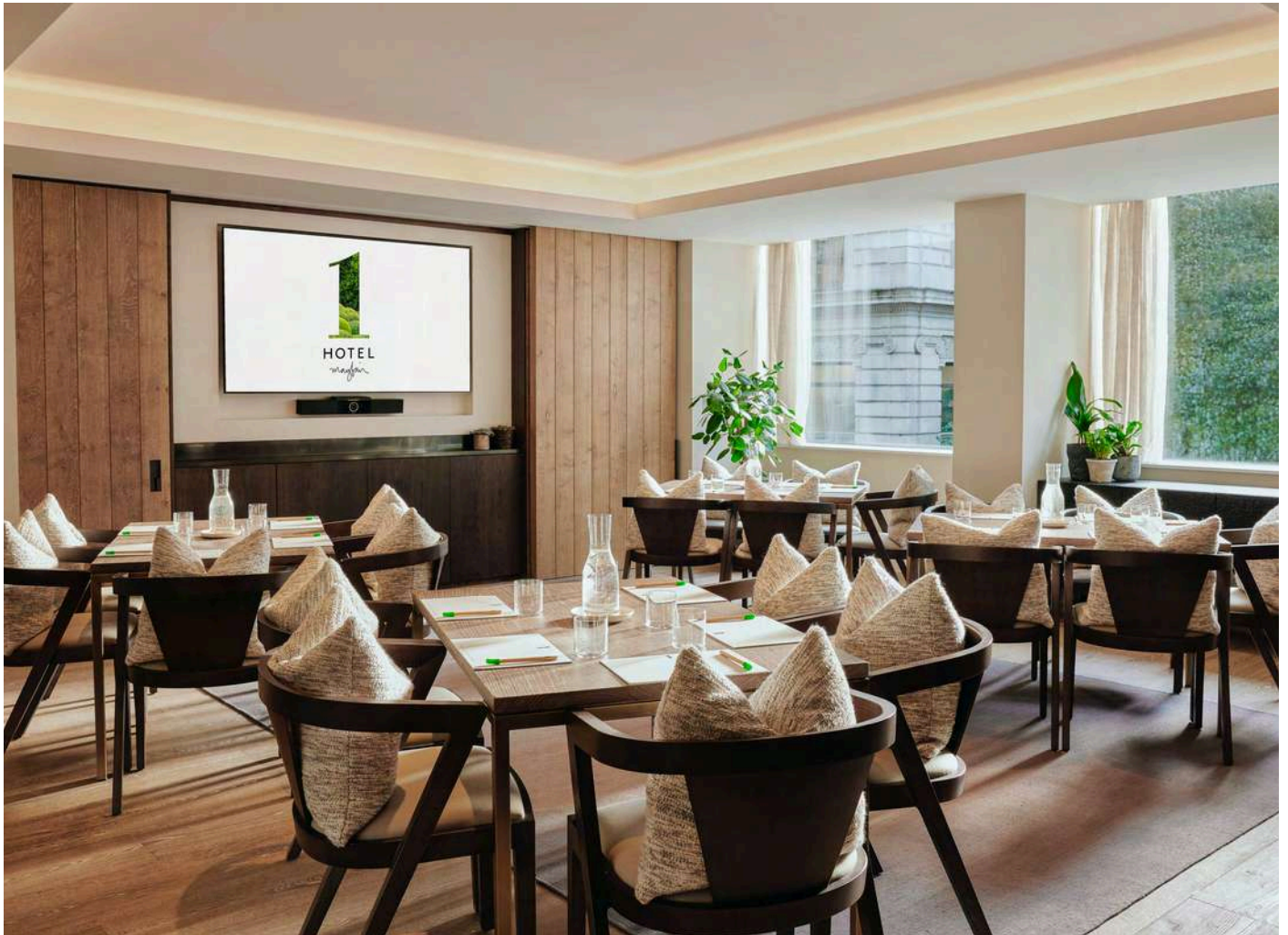
FIELD WOOD THEATRE
26 GUESTS

FIELD WOOD BOARDROOM
10 GUESTS

FIELD WOOD BANQUET
20 GUESTS



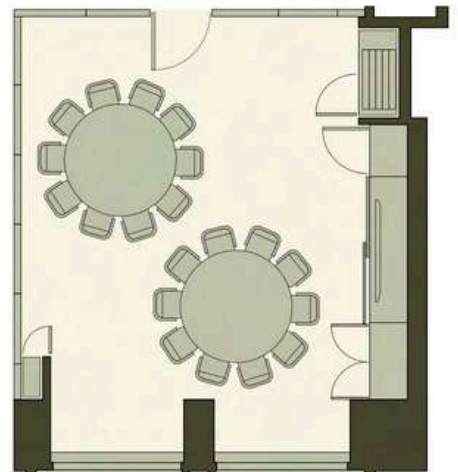
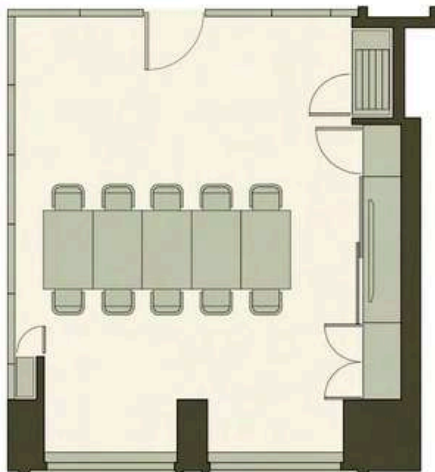
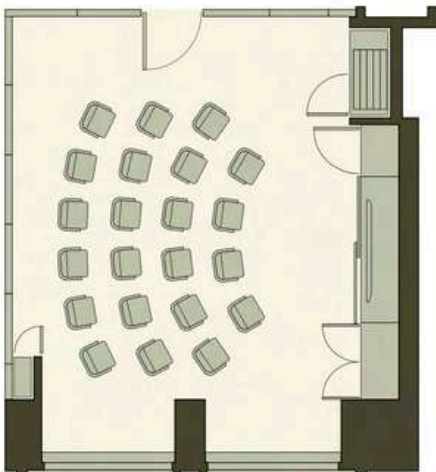
CLOVER



CLOVER THEATRE
22 GUESTS

CLOVER BOARDROOM
10 GUESTS

CLOVER BANQUET
20 GUESTS

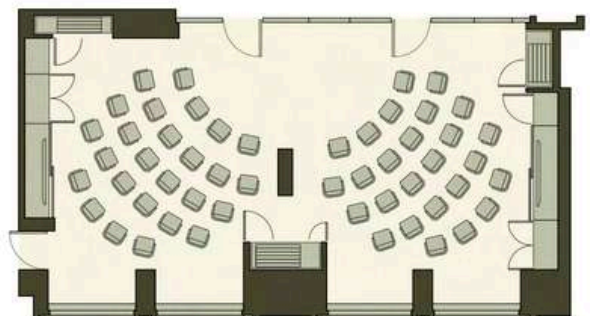
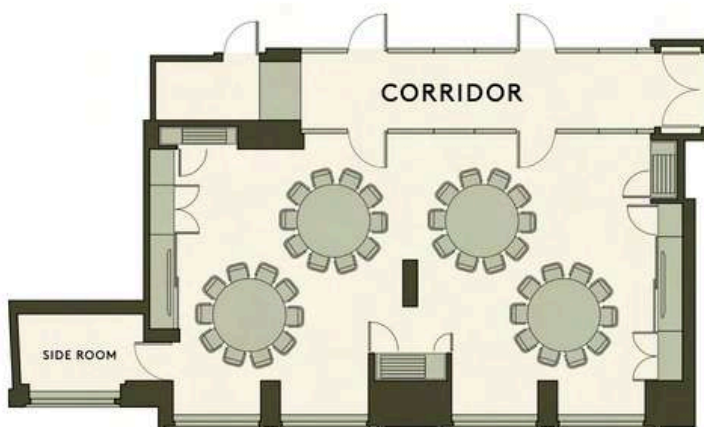


FIELD WOOD CLOVER

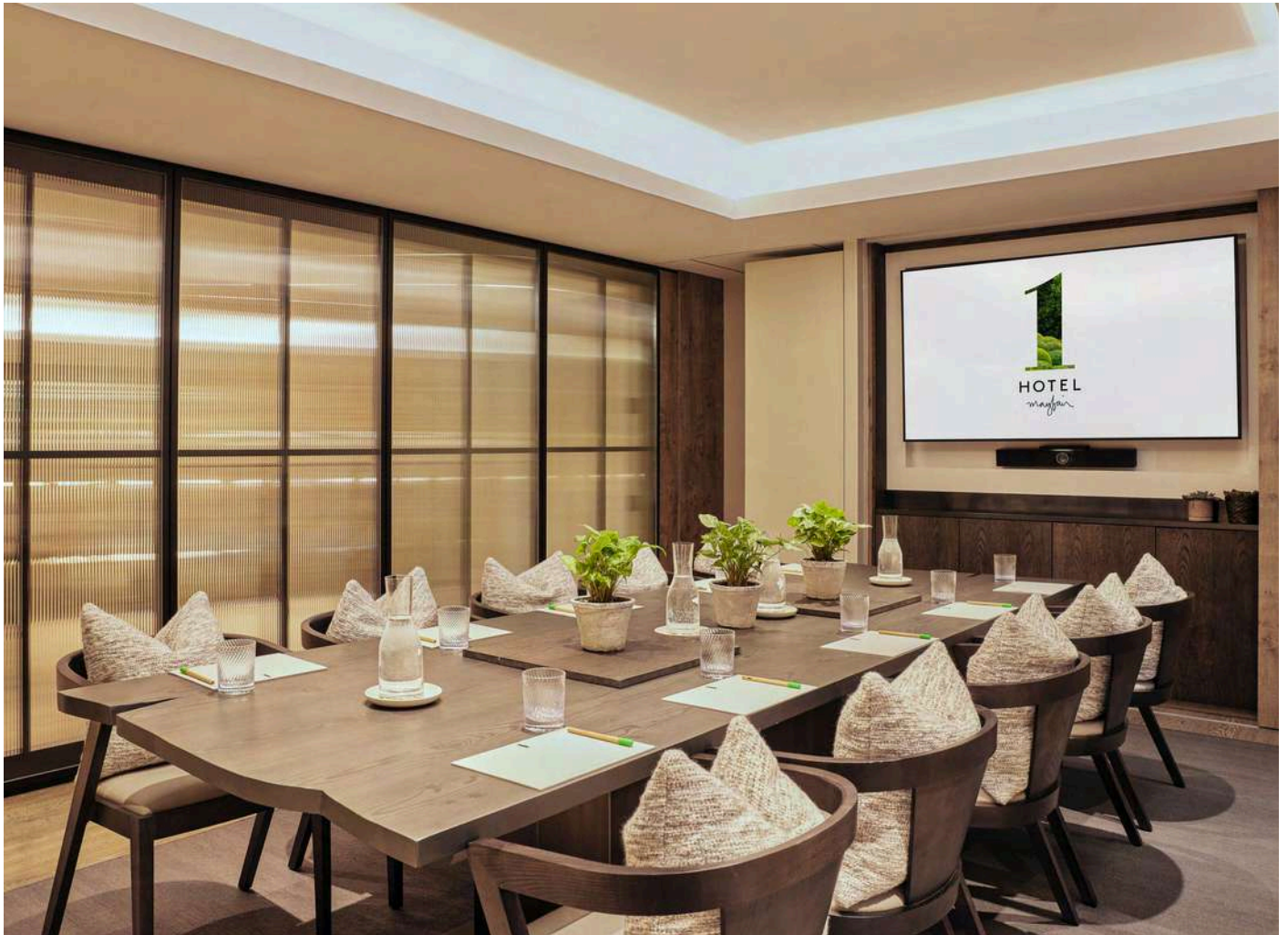


FIELD WOOD CLOVER BANQUET
4 ROUND OF 10 GUESTS EACH

FIELD WOOD CLOVER THEATRE
52 GUESTS WITH FRONT PROJECTION

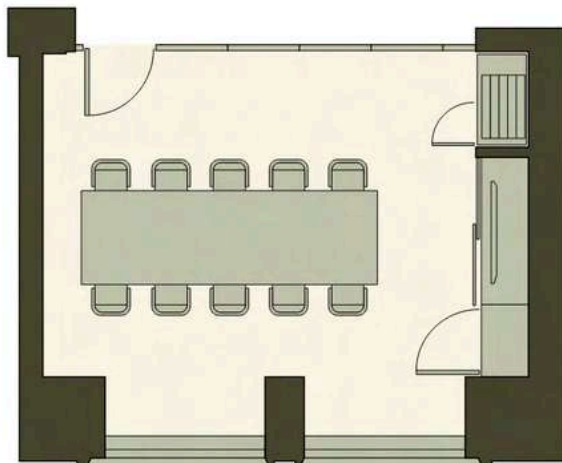


WILD OAT



WILD OAT BOARDROOM

10 GUESTS



MEADOW



MEADOW

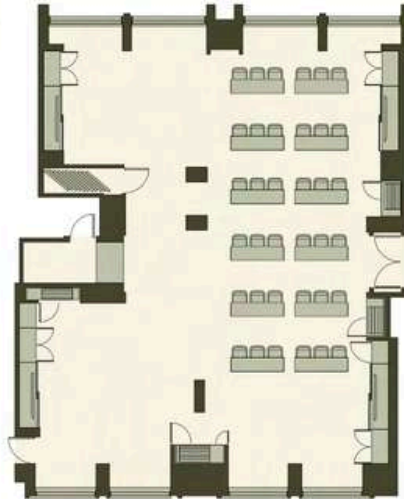
MEADOW THEATRE STYLE

60-66 GUESTS DEPENDING ON AV



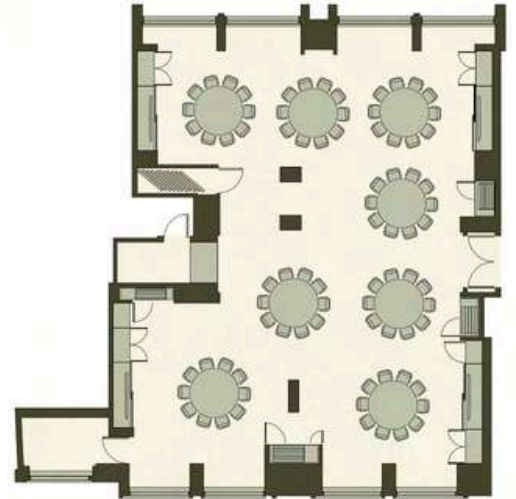
MEADOW CLASSROOM

24 WITH 2 PER TABLE, 36 WITH 3 PER TABLE



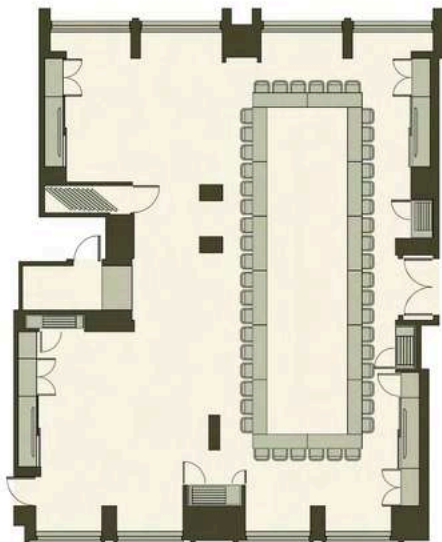
MEADOW BANQUET

8 TABLES OF 10 GUESTS EACH



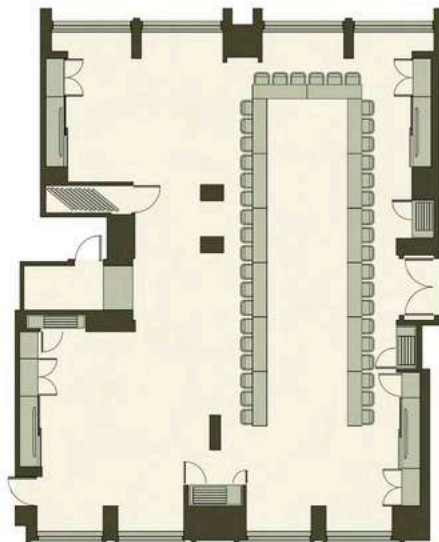
MEADOW HOLLOW SQUARE

32 WITH 2 PER TABLE, 48 WITH 3 PER TABLE



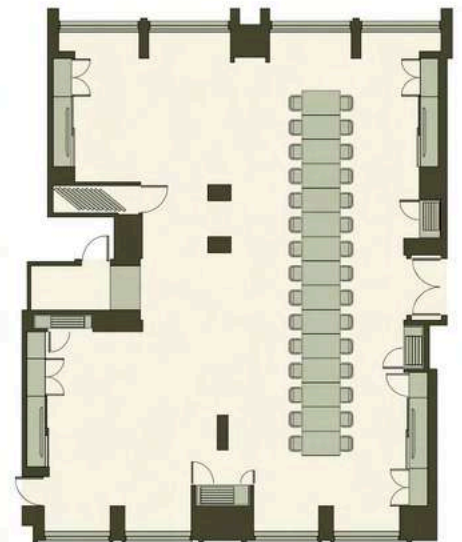
MEADOW U-SHAPE

28 WITH 2 PER TABLE, 42 WITH 3 PER TABLE



MEADOW BOARDROOM

30 GUESTS



The image shows the interior of a restaurant named Dovetale. The room features a high ceiling with exposed wooden beams and a wall with vertical wood paneling and textured sections. A large, ornate mirror in the center reflects the dining area and a bar in the background. To the left, a wooden bar holds a large green plant. The seating includes a long green velvet sofa and wooden chairs with light-colored fabric upholstery. Several tables are set with white dishes, glasses, and folded napkins. Two floor lamps with white shades are positioned on either side of the central mirror.

Dovetale



DOVETALE

Two Michelin-starred Chef Tom Sellers' Dovetale, is grounded in a deep respect for seasonal, organic and locally sourced ingredients creating reimagined European classics, showcased through produce-led menus.

From intimate private dinners and semi-private gatherings to fully private parties, Dovetale accommodates different layouts with an incredible atmosphere in the heart of Mayfair. Dovetale also includes an outdoor terrace with a hammered copper fireplace and pergola, perfect for intimate gatherings.

DOVETALE RESTAURANT CAPACITIES

Seated: 90 pax (100 pax maximum)
Standing: 200 pax (furniture removed)

DOVETALE RESTAURANT TERRACE CAPACITIES

Seated: 40 pax
Standing: 70 pax (furniture removed)

TOTAL TOGETHER

Seated: 130 pax
Standing: 275 pax (furniture removed)

A warm and inviting living room interior. The focal point is a large, rustic stone fireplace with a fire burning inside. In front of the fireplace are two plush, orange-colored sofas. The sofa on the left is adorned with a white fur throw and several patterned and solid-colored pillows. A large, dark, dome-shaped pendant lamp hangs over the seating area. A low, round coffee table sits in the center, holding a small lit candle. The background features a glass-enclosed area with plants and a small flag. The overall atmosphere is cozy and modern with natural elements.

DOVER YARD



DOVER YARD

Escape to Dover Yard, an enchanting bar and lounge that seamlessly blends nature-inspired aesthetics with a captivating ambiance. Our Bar team's sustainable and conscious approach shines through the drink menu, offering refreshing and innovative cocktails crafted with natural, locally sourced ingredients.

Located in the heart of the hotel, Dover Yard overlooks a lush botanical courtyard, providing a serene oasis for breakfast events, panel talks or receptions.

DOVER YARD CAPACITIES

Standing: 150-175 pax

NIGHTINGALE

NIGHTINGALE





NIGHTINGALE

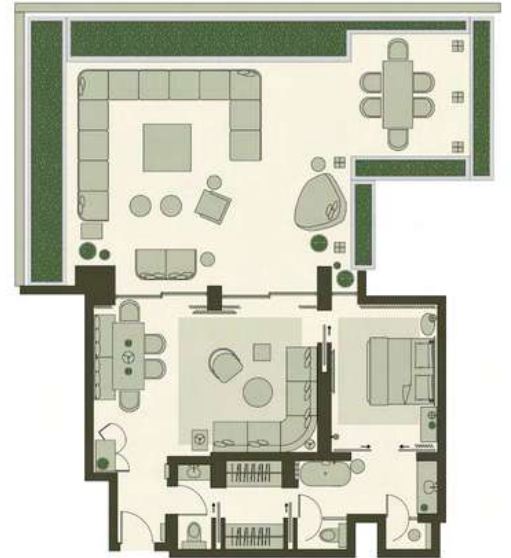
Introducing Nightingale, a modern European-inspired café in the heart of Mayfair. Nightingale is located at 3 Dover Yard with an indoor-outdoor space perfect for lunch, mid-week cocktails or hosting your next private dinner party and event.

NIGHTINGALE CAPACITIES

- Seated on 1 x table: 22 pax
- Seated on 3 x separate tables: 30 pax
- Standing Inside only: 45 pax
- Standing Inside & Outside: 60 pax

A modern, high-ceilinged living room with large windows, a chandelier of glass pendant lights, and contemporary furniture. The room features a large, light-colored sectional sofa with multiple pillows, a low wooden coffee table, and a side table with a lamp and books. The space is bright and airy, with a view of a city skyline through the windows.

SIGNATURE SUITES FOR EVENTS



GARDEN TERRACE SUITE

See the city in a new light from your 102 sq.m outdoor terrace space on the hotel's 7th floor, featuring a dining table for six and sofa seating for 10.

SIZE: 1873 SQ.FT. | 174 SQ.M.

Capacity Inside: Up to 15 Standing
Outside: Up to 40 Standing

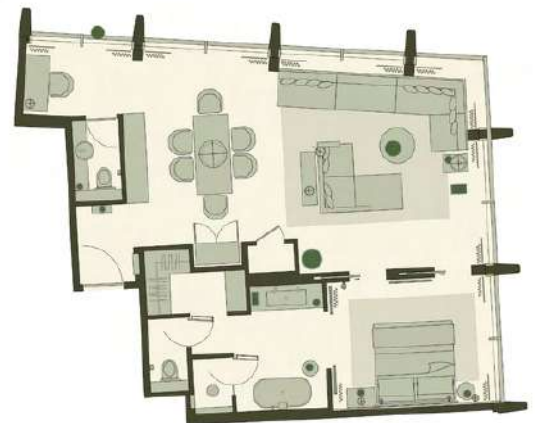


PICCADILLY GREENHOUSE SUITE

Plan your perfect event in this greenhouse getaway boasting panoramic skyline views of Green Park, Big Ben, Palace of Westminster and Piccadilly from the hotel's 8th floor. Floor to ceiling windows ensure a light-filled indoor dining area with a table for six, and a comfy corner sofa for relaxing.

SIZE: 883 SQ.FT. | 82 SQ.M.

Capacity Inside: Up to 30 Standing



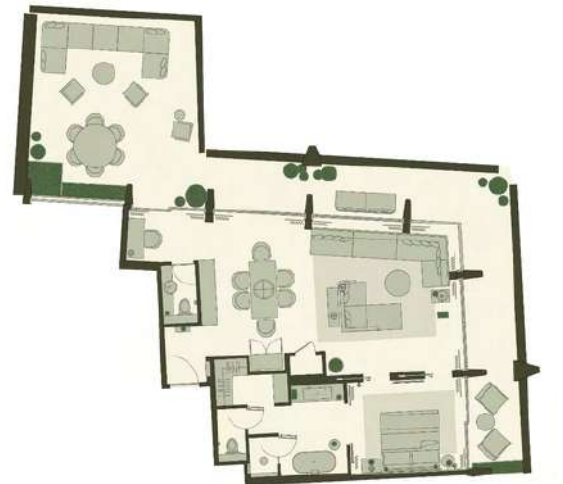


DOVER TERRACE SUITE

Take in sweeping skyline views from your 56.5 sq.m wrap-around terrace. On the inside, a host's dream with a handcrafted wooden dining table, spacious sofa, and floor to ceiling windows.

SIZE: 1528 SQ.FT. | 142 SQ.M.

Capacity Inside: Up to 30 Standing





GREEN PARK PENTHOUSE

Mayfair's largest penthouse is a haven for hosting. Imagined as a garden room due to its prime position overlooking Green Park, this Penthouse Suite is a showstopper. Inspired by the tonal palette of the park, the suite applies natural textures to bring drama and play with light and shade. The double height living area and wrap-around terrace invite you to admire expansive views of Green Park and the city skyline. On the inside, luxurious features such as the two-sided fireplace, live textured tree stump bar, raw timber dining table that bring the calming powers of nature into your space.

SIZE: 2949 SQ.FT. | 274 SQ.M.

Capacity Inside: Up to 60 Standing

GREEN PARK PENTHOUSE

